



**Coming  
Fall 2010**



**AIMSweb<sup>®</sup>**

**Announcing  
AIMSweb Behavior**

**Valuable screening and monitoring  
resources for behavior and social skills**

AIMSweb Behavior is the most comprehensive system available—the only system that includes universal screening, progress monitoring and research-based interventions.



AIMSweb<sup>®</sup>, a comprehensive benchmark and progress monitoring system, introduces a new behavior module designed specifically for Response to Intervention (RTI) and positive behavior support programs in grades K-12. The system enables teachers, PBS specialists, and other professionals to work together to identify behavior issues early, intervene within the classroom, and measure student improvement.

**For an upgrade of \$1.00 per student to any AIMSweb subscription,\* the behavior module provides:**

- **Benchmarking:** Valid and reliable universal screening tools for behavior and/or social skills problems that may interfere with academic success
- **Progress monitoring:** Customizable online tracking of specific classroom behavior
- **Intervention:** Online, evidence-based, classroom intervention resources to reduce problem behaviors and improve social skills in the classroom
- **Data management:** Utilizing AIMSweb's extensive reporting capabilities and analysis tools
  - Integrate academic and behavioral information
  - Aggregate behavior reporting by class/school/district/state/national
  - Individualized student behavior benchmark and progress monitoring reports

\*Standalone option available. Please contact a sales consultant.

**PEARSON**

 **PsychCorp**  
a PEARSON brand



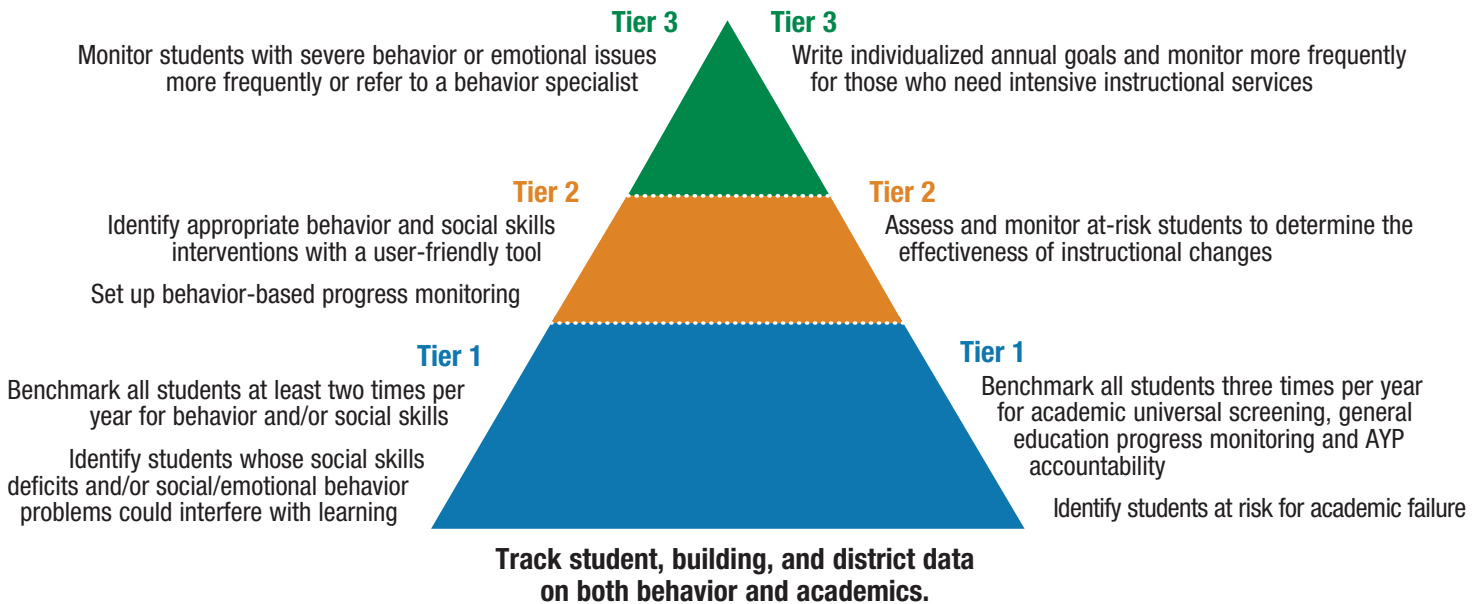
# AIMSweb®

## Announcing AIMSweb Behavior

AIMSweb's behavior module enables a comprehensive RTI model that looks at the whole student

**AIMSweb Behavior**

**AIMSweb Academics**



### Why screen and intervene early for behavior and social skills?

Teachers know that a student's behavior and emotional problems, or lack of social skills, can jeopardize academic performance—for that student, and potentially that student's classmates. Systematic universal screening for behavior and social skills can help identify students at risk early—both those students that act out as well as those who internalize—before they receive office discipline referrals. This allows schools to give their students the extra support they need when it will be the most effective.



## Contact us today!

To learn more about AIMSweb Behavior:

[AIMSweb.com/behavior](http://AIMSweb.com/behavior) 866-313-6194 [aimswesales@pearson.com](mailto:aimswesales@pearson.com)



866.313.6194 | [AIMSweb.com](http://AIMSweb.com)

